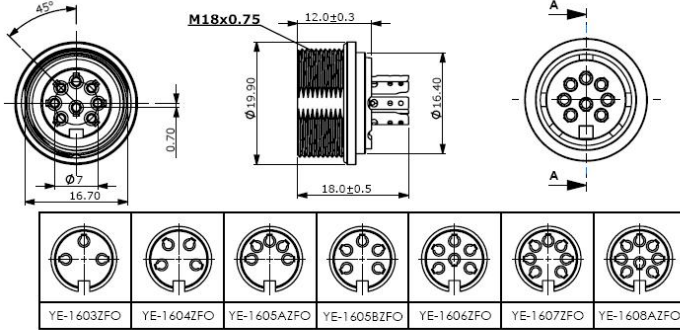
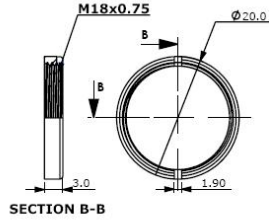
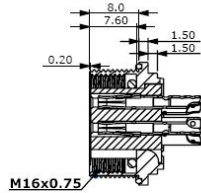


YE-160XZFO DIN SOCKET PANEL MOUNT SCREW LOCKING



MATERIAL :

1. SHIELD COVER : Zn ALLOY NICKEL PTD.
2. SCREW NUT : BRASS NICKEL PTD.
3. HOUSING : PA66+GF
4. TERMINALS : COPPER GOLD PTD.
5. O-RING : SILICON

SPECIFICATION :

Rating : 100V AC 1A max.
 Contact Resistance :
 Pins 30mΩ max.
 Shell 50mΩ max.
 Insulation Resistance :
 100MΩ at 500V DC min.
 Voltage Withstand :
 250V AC for 1 minute



YE-1603ZFO



YE-1604ZFO



YE-1605AZFO



YE-1605BZFO



YE-1606ZFO



YE-1607ZFO



YE-1608AZFO